

**TRACKVISION™**

WE KEEP AN EYE  
ON THE ROAD  
FOR YOU

ADVANCED VISIBILITY SOLUTIONS  
FOR TRUCKS



**BACKUP  
CAMERAS**



**CONNECTED  
DASHCAM**



**FLEET  
MANAGEMENT**



**BACKUP  
RADAR**



**DVR  
RECORDER**



# TRACKVISION™

## Find your camera solution

Developed from our vast experience in the transportation industry, the TrackVision brand offers industrial-level HD cameras and reversing radars capable of continuous operation under all conditions. Developed to the highest standards, TrackVision visibility solutions have been designed to optimize the safety and efficiency of transport operations, while improving cabin ergonomics and user experience.



TRV 11604



TRV 10465



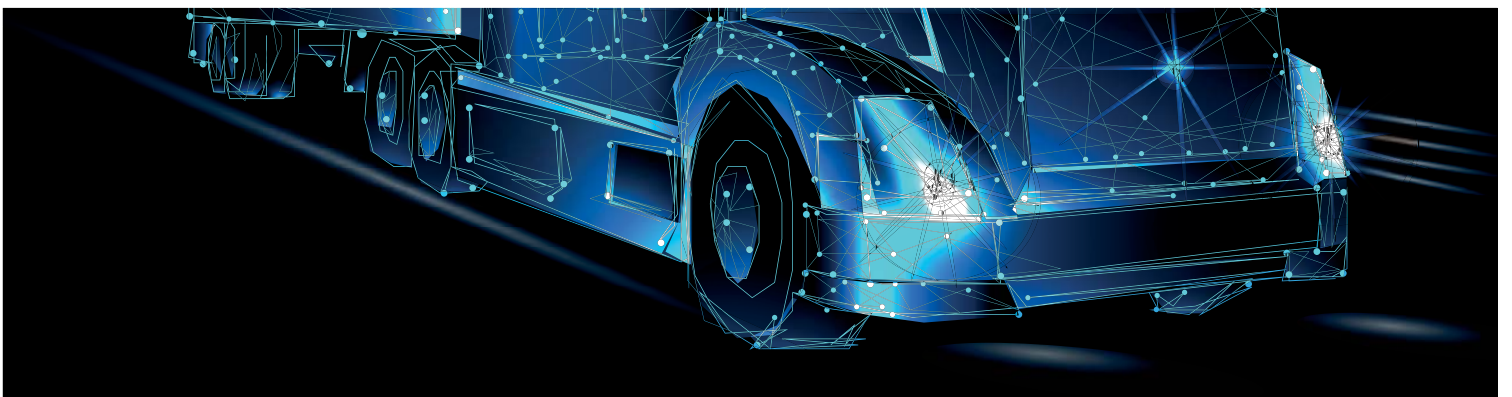
TRV 10590



TRV 05500



TRV 03000



TRV 11604

## TrackVision series 2 quad view



Simple view



Dual view



Quad view



Zoom



Reversing  
marker



Waterproof



Dust resistant



Vibration  
resistant

### A high definition image with zoom on embedded!

The new TrackVision Series 2 provides high definition vision, while incorporating our renowned ruggedness to withstand the worst road conditions. The camera transfers a clear image to the touch screen monitor. When certain reversing conditions require it, it is possible to activate the digital zoom by simply pointing at the screen!

The TrackVision monitor can display up to 4 camera images. Whether single, double, triple or quadruple, you can switch from one mode to another depending on the visibility required. For semi-trailers, spiral cables with connectors are available and we also offer the wireless option with the camera-monitor transmitter and receiver duo.

#### KIT INCLUDES

1. **TRV 11600** TrackVision Monitor 7" AHD Quad Touch
2. **TRV 10530** TrackVision Camera 130° AHD 1080P
  - › **TRV 14310** Cable coax 10M-32ft M-F



#### KEY FEATURES

- › Specially designed for highway trucks
- › Quad view display with digital zoom
- › HD waterproof monitor with touch screen
- › 1080P camera with microphone
- › Trailer kits available for semi-trailer
- › Wireless transmitters available
- › Easy to use and install

#### OPTIONS

##### Cables for cameras

- › TRV 14305 Cable coax 5M-16ft M-F
- › TRV 14310 Cable coax 10M-32ft M-F
- › TRV 14315 Cable coax 15M-48ft M-F

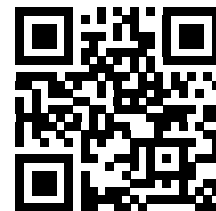
##### Tractor/trailer kit

- › TRV14628 Coil cable 1M and connectors M-F kit  
Including :

- TRV 14625-1 Coil cable 1M, extendable to 10M
- TRV 14623-3M Socket with cable 1M for coil cable - monitor
- TRV 14623-3F Socket with cable 1M for coil cable - camera

##### Wireless kit

- › TRV 15227 TrackVision transmitter-receiver 2.4GHz
- › TRV 10531 TrackVision Camera 130° analogue



**SPECS SHEET**

TRV 10465

# TrackVision wireless SnapCam



Simple view



Dual view



Reversing marker



Waterproof



Dust resistant



Vibration resistant

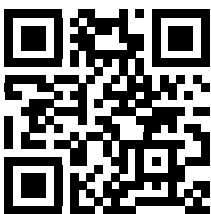
## See what you want, where you want!

SnapCam from TrackVision has been designed when camera position is critical and needs to be moved frequently. Thanks to the innovative SnapCam incorporating a strong built-in magnet, easing its positioning on metallic structure. The waterproof monitor has a powerful antenna and can manage up to 4 wireless cameras. Features like split screen is available to monitor 2 views at the same time.

The autonomy can go up to 10 hours of continuous usage. Wireless fixed camera, also available, can be coupled with TrackVision wireless monitor and innovative portable battery pack is available to give you more flexibility.

### KIT INCLUDES

1. **TRV 11705** TrackVision Monitor 7" wireless waterproof
2. **TRV 11726** TrackVision SnapCam 130° + integrated battery



SPECS SHEET

### KEY FEATURES

- › Auto-pairing for convenient use
- › USB charging camera
- › HD waterproof monitor
- › Low power consuming when standby
- › Transmission range up to 100m
- › Easy to use and install

### OPTIONS

#### Wireless options

- › TRV 11736 TrackVision Camera 130° analogue + 12 Vdc Connection or battery
- › TRV 11741 TrackVision Magnetized Battery for TRV 11736

#### Long range wireless options

- › TRV 15227 TrackVision transmitter-receiver 2.4 GHz for TRV 11736



TRV 11736



TRV 11741



TRV 15227

TRV 10590

# TrackVision RadCam 3Z



Simple view



Dual view



Quad view



Reversing marker



Waterproof



Dust resistant



Vibration resistant

## Take control of your truck's environment!

RadCam from TrackVision detects stationary objects and people in the detection field within 200 milliseconds, up to 10 meters away. This advanced system alerts the driver with visual and audible warnings. Divided into three color-coded areas on the display, the potential hazard is easy to identify and helps the truck driver to maneuver safely.

The system's ability to detect only the approach of an object from the sensor limits the number of false detections caused by unimportant objects in the detection zone. The industrial grade system is waterproof to IP69K standard and works well in all weather conditions.

### KIT INCLUDES

- 1. TRV 10482** TrackVision Monitor 7" HD-radar quad view
- 2. TRV 131150** TrackVision Camera 150° AHD 10IR with suncover & microphone
- 3. TRV 10510** TrackVision Radar 3 zones
- › **TRV 15115** Cable RadCam 15M-49ft



### KEY FEATURES

- › Backup radar with 3 zones
- › Selectable modes zones
- › Up to 10 meters detection
- › Waterproof and high-definition monitor
- › 1080P AHD Camera with heated infrared
- › Quad view display
- › Audible alarm on detection



SPECS SHEET



Long range



Medium range



Short range



TRV 05500

# TrackVision connected 4G event recorder



Waterproof



Dust resistant



Vibration resistant



Full HD



Connected



Built-in GPS



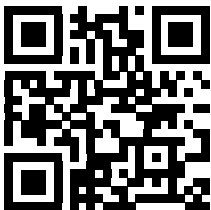
Built-in G-shock

## Realtime recording that ease fleet management and reporting

This TrackVision set is a full HD 1080P ruggedized, 5-channel mobile digital recorder (MDVR) designed for vehicle surveillance and monitoring, with built-in connectivity, advanced video compression, GPS positioning technology for live tracking and WIFI for wireless data upload. The MDVR fully integrates with TrackVision's platform and has a built-in three-axis G-shock sensor as standard, offering full driver behaviour reporting

### KIT INCLUDES

- › DVR
- › Cellular + GPS antennas



SPECS SHEET

### KEY FEATURES

- › Industrial design with 1TB storage
- › Multiple camera realtime recording\*
- › Automated incident downloading
- › Web portal for viewing events\*\*
- › Realtime email notifications
- › Fleet management reporting
- › 4G, LTE connectivity\*\*
- › GPS tracking

### OPTIONS

- › Forward-facing camera
- › Side view camera
- › Rear view camera
- › Monitor

\* Sold separately.

\*\* Monthly fees apply.

TRV 03000

# TrackVision connected 4G DashCam



Waterproof



Dust resistant



Vibration resistant



Full HD



Connected



Built-in GPS



Built-in G-shock

## AI-powered vehicle camera with fleet management

DashCam from TrackVision set combines a next generation 4G vehicle camera with the power of artificial intelligence (AI). The advanced video telematics solution has been specially developed for commercial vehicle operations to help reduce fleet risk and prevent incidents before they happen. This means transport business can effectively improve safety by reducing the frequency and severity of collisions.

Using the latest AI technologies – including Advanced Driver Assist System (ADAS) and Driver Status Monitoring (DSM) – the TrackVision DashCam detects both hazards on the road and high-risk driver behaviours. The ADAS camera identifies lane departure, forward collisions and tailgating, while the in-vehicle monitor can recognise if a driver is tired or distracted by actions such as mobile phone use, smoking and eating. This means a driver can immediately be alerted to potential dangers, while an office-based fleet manager can monitor areas of concern both in realtime and historically.

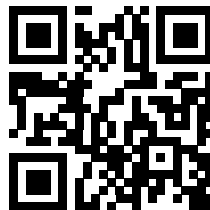


### KEY FEATURES

- › Specially designed for highway trucks
- › Realtime recording /viewing
- › Automated incident downloading
- › Web portal for viewing events
- › Realtime email notifications
- › Fleet management reporting
- › 1080P resolution
- › 4G, LTE, GPS technologies

### OPTIONS

- › Rear view camera
- › DSN camera



SPECS SHEET



# A WORLD OF PRECISION

- We develop products and technological solutions that integrate weighing and vision to optimize transport truck operations.

**ALL THE EXPERTISE YOU NEED,  
AT YOUR FINGERTIPS**

Also available from TrackTech, ask about TrackWeight Onboard Truck Scale.

YOUR TRACKVISION DEALER:

**WIM** WILLIAMS  
MECHANICAL

**TRACKVISION™**  
[track-vision.com](http://track-vision.com)

TrackVision and TrackWeight are registered trade mark of: TrackTech Electronics Inc., Canada

[tracktech.net](http://tracktech.net)